

Function Outputs on the DG383AR

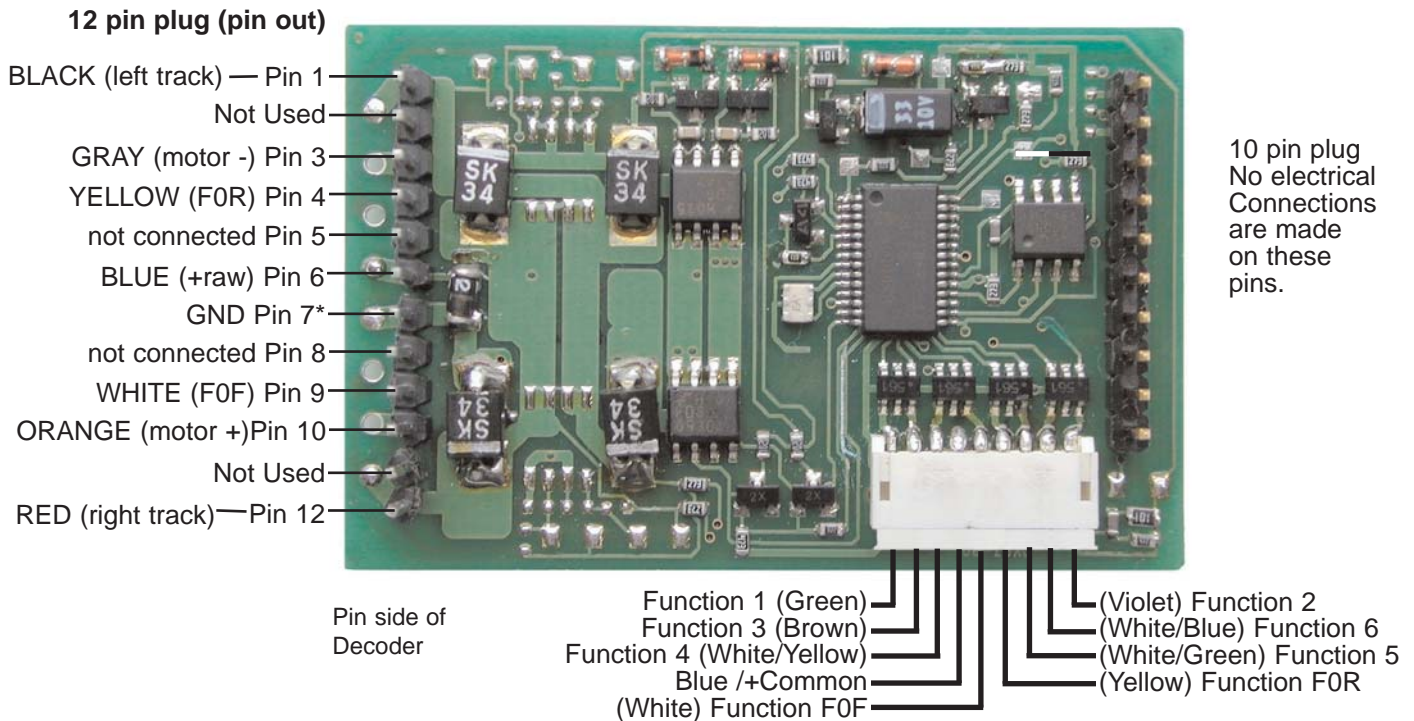
The DG383AR has eight function outputs available using the 9-pin connector located on the underside of the decoder (*Figure 1*). The DG383AR decoder is factory configured to control the directional Forward (F0F) and Reverse (F0R) lights on the locomotive through the DCC 12-pin plug. Extra connections for F0F and F0R, as well as functions F1, F2, F3, F4, F5 and F6 are available using the 9 pin function harness supplied with the decoder. These functions can be used by soldering the wires as indicated in the wiring diagram (*Figure 1*) to additional lights (or other functions) you wish to control.

All 8 function outputs can be programmed as Digitrax FX³ lighting effects or as standard on/off functions.

All function outputs can be qualified based on:

1. Forward or Reverse direction of travel, or
2. Whether F0 is on or off, or
3. Both direction of travel and whether F0 is on or off, or
4. Whether the locomotive is stopped or moving.

Figure 1. DG383AR Decoder Function Outputs



Note: Following G-Scale convention: BLACK/left hand rail pickup (+v) is DC forward.
DCC forward applies +v to motor -/GRAY

***Note:** When using DG383AR with Aristocraft Alco FA-1, remove pin 7 before installing the decoder in the locomotive. This will make the loco operate properly when power is applied.